

0261524



BI 5910

RE 5910

... Wireless escort for your safety

- For E-Stop and control functions
- According to EN 13849 PL e, safety category 4 to EN 954-1
- According to DIN EN ISO 13850
- Safety radio transmission

Your Advantages

- For higher availability of your machines and plants
- Ideal solutions for mobile and stationary machines and plants with dangerous areas
 - during automatic operation e. g. to clear failures
 - during set up e. g. to adjust machine parameters, maintenance, set up
- SAFEMASTER W offers as wireless system all advantages of radio control e.g.:
 - Higher availability of machines because damage of trailing cables is avoided
 - Higher mobility of the operator by easy moving around with wireless control
 - Cost saving by replacing wire bound operating panels
 - Less mounting, installation and wiring time
 - No wearing on trailing cables, slip rings etc.
 - Easy retrofit and modernising of machines
 - Higher flexibility
 - Excellent ergonomics
- Optimised sight on operating area during set up
- Easy grouping of different production machines with common e-stop and separate or common start
- User legitimating with electronic key on remote control possible

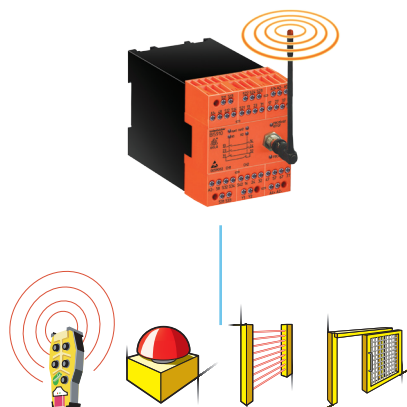
Approvals and Marking



Additional Information about this topic

- You will find information about the radio controlled safety modul in the datasheet BI 5910
- You will find information about the remote control in the datasheet RE 5910
- You will find information about SAFEMASTER M in the separate catalogue „system description SAFEMASTER M“

Options for Control



1 x	2 x	-	-
1 x	-	2 x	-
1 x	1 x	-	1 x
1 x	1 x	1 x	-
1 x	-	1 x	1 x

Applications of SAFEMASTER W

E-Stop

Protection of men and machines in mobile and large plants where a fixed wiring is not possible, e.g. production halls, mounting scaffolds, plants and dangerous accessible areas.

Also for control functions for e. g. :

- Step control
- Start-stop functions
- Speed adjustment
- Positioning and actuator selection

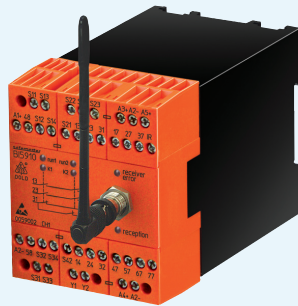
Description

SAFEMASTER W includes a very compact and ergonomic remote control RE 5910 and a safety module with radio control BI 5910. The remote control provides personal protection when entering dangerous areas and allows besides the emergency stop function also control functions with the integrated push buttons and switches. The safety outputs of the BI 5910 guarantee safe disconnection. For control functions it includes 7 semiconductor outputs.

Remote Control RE 5910
with elektronik key



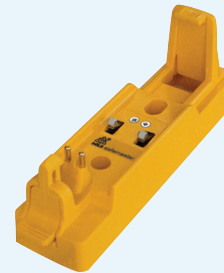
Replace-
ment key
(as option)



Radio Controlled Safety Module
BI 5910



Infrared
sensor
(as option)



Charger Station



Aerial
(as option)

Extension for
Aerial
(as option)

Remote Control RE 5910

The remote control includes 1 e-stop and 1 start button as well as 4 function buttons for radio remote control. It does not replace conventional safety circuits, but offers additional features. I.e. wired safety circuits remain active, although a remote control is used.

Electronic Key for Remote Control

The electronic key enables the activation of the remote control and offers personal access permission to a certain configuration of the remote control. It contains the following information:

- frequency that is used for transmission
- Identity code of the system
- Time interval for activity monitoring
- Configuration of function keys

Radio Controlled Safety Module BI 5910

The radio safety module reacts on the signals of the corresponding remote control and the wired safety components. To detect the corresponding remote control frequency and identity code must be identical.

Infrared Module RE 5910/060

If the start of a plant must only be possible from a certain area, e.g. to have a view on the dangerous zone, the option with infrared start is the ideal solution. Accidents can be avoided by starting from defined zones.

Charger Station RE 5910/010

If the remote control is not used it has to be placed in the charger and switched off. This starts the charging process for the battery. The charger has 2 monitoring contacts. These are used to detect the removal of the remote control.

Aerials

The receiver unit requires an aerial that can be mounted directly on the front of BI 5910. If the receiver is mounted in a metal enclosure the aerial has to be placed outside. For the outside mounting a special coaxial cable is available.